
Chapter 18
Boundaries and Regions

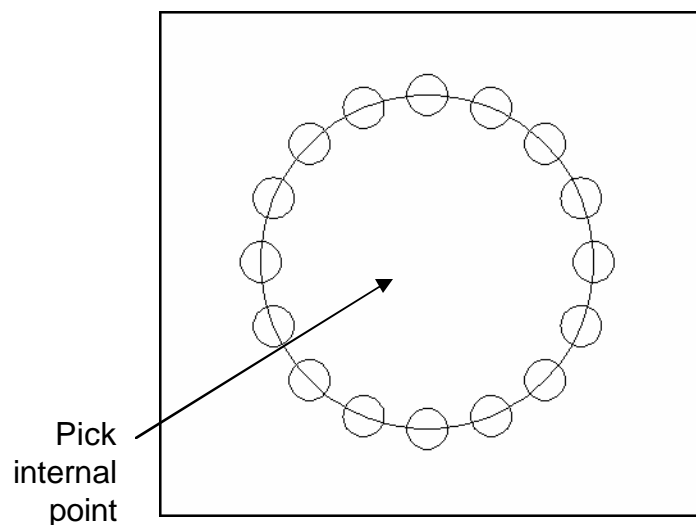
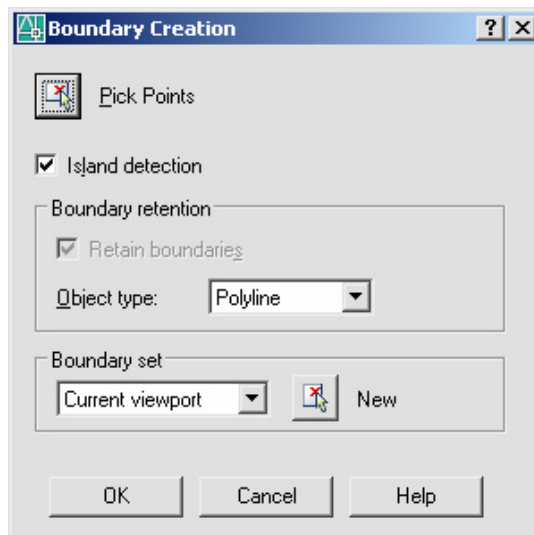
AutoCAD 2D Tutorial

Boundary Command 18.1

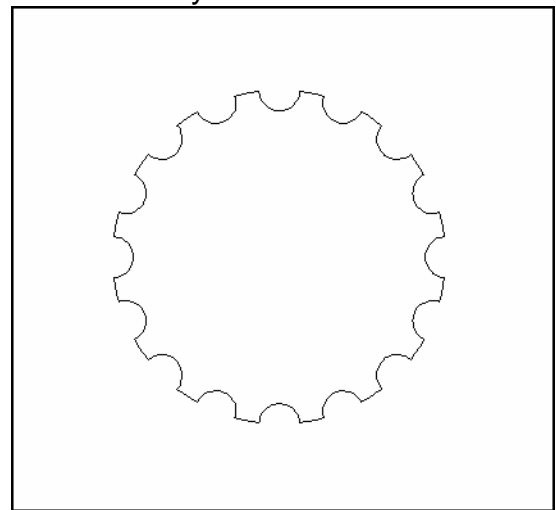
Defines the object type, boundary set, and island detection method for defining boundaries from points you specify.

1. **Choose** Draw, Boundary
or
2. **Type** BOUNDARY at the command prompt.

Command: **BOUNDARY**



Boundary created



AutoCAD 2D Tutorial

Region Command 18.2

Regions are two-dimensional areas you create from closed shapes or loops. Closed polylines, lines, and curves are valid selections. Curves include circular arcs, circles, elliptical arcs, ellipses, and splines.

1. **Choose** Draw, Region
2. **Type** REGION at the command prompt.
Command: **REGION**
Select objects: **(pick boundary)**
Select objects:1 found
1 loop extracted.
1 Regioncreated.

Object created as a region

